

Gateway Division NMRA 2009 Annual Model and Photo Contest

NMRA conventions and train show events feature a model and photo contest where entries are displayed to be viewed and enjoyed by other model railroaders and the general public. Any NMRA member may enter models and photos into these contests.

The following are the contest winners from the 2009 Gateway Division annual model and photo contest.

Click on any of the thumbnail photos below to see an enlarged, high-quality version.

 <p>#153 Steam Locomotive 2-6-6-2</p>	<p>Steam Locomotive First Place 2009 Tom Trotter</p>
 <p>2-8-0 Steam Locomotive B&O #2785</p>	<p>Steam Locomotive Second Place 2009 Phil Bonzon</p>
 <p>2-6-6-2 Steam Locomotive B&O #7704</p>	<p>Steam Locomotive Third Place 2009 Phil Bonzon</p>
 <p>Terminal #1 Diesel Locomotive Valley Park</p>	<p>Diesel Locomotive First Place 2009 Dave Roeder</p>
 <p>Railbus "A" Locomotive BC&G</p>	<p>Diesel Locomotive Second Place 2009 Phil Bonzon</p>
 <p>#558 Diesel Locomotive Wabash</p>	<p>Diesel Locomotive Third Place 2009 Nicholas Mantja</p>
 <p>Louis & Suburban #56 Streetcar East St.</p>	<p>Traction First Place 2009 John Carty</p>
 <p>Pacific MP 815825 Flat Car Missouri</p>	<p>Freight Car First Place 2009 Gregor Moe</p>

- Home
- Division Events
- Article Library
- Project Railroads
- Model Photos
- DCC
- Get Stuff
- Layout Directory
- St. Louis / Links
- What's New
- About Us

Topic Menu

- 2011 Contest
- 2010 Contest
- 2009 Contest
- 2008 Contest
- 2007 Contest
- 2006 Contest
- 2005 Contest
- 2004 Regional
- 2004 Contest
- 2003 Contest
- 2002 Contest
- 2001 Contest
- 2000 Contest
- 1999 Contest
- 1998 Contest
- 1997 Contest
- 1996 Regional
- 1996 Contest
- 1995 Contest
- 1994 Contest
- Model Photos 1
- Prototype 1

	
 <p>TCC #521</p> <p>Tank Car</p>  	<p>Freight Car Second Place 2009 Dave Roeder</p>
 <p>Pacific</p> <p>Coast #1508 Wood Box Car</p>	<p>Freight Car Third Place 2009 John Isbell</p>
 <p>GTW 79050</p> <p>Caboose</p> 	<p>Caboose First Place 2009 Tom Smith</p>
 <p>B&O</p> <p>C-2245 Wagon Top Caboose</p>	<p>Caboose Second Place 2009 Phil Bonzon</p>
	<p>Caboose Third Place 2009 Gregor Moe</p>

 <p>CGW 215 Wood Caboose</p>	
 <p>BC&G #17 Passenger Coach</p> 	<p>Passenger Car First Place 2009 Phil Bonzon</p>
 <p>Tonopah & Tidewater Passenger Car</p> 	<p>Passenger Car Second Place 2009 Tom Smith</p>
 <p>Wabash Censtar Passenger Car</p>	<p>Passenger Car Third Place 2009 John Carty</p>
 <p>SG&N #42 Bullion Car</p> 	<p>Maintenance of Way First Place 2009 Dave Roeder</p>
 <p>BC&G Crane X-5 and Flat 108</p> 	<p>Maintenance of Way Second Place 2009 Phil Bonzon</p>
 <p>SLSF "Frisco" #50386 Crane</p>	<p>Maintenance of Way Third Place 2009 (tie) Dave Roeder</p>



[SLSF](#)

"Frisco" #5038 Crane Tender

Maintenance of Way
Third Place 2009 (tie)
Dave Roeder



[Concrete](#)

Coaling Tower with Steam



[Locomotive](#)



Online Structures
First Place 2009
Phil Bonzon



[Wanda's](#)

Recycling Building

Online Structures
Second Place 2009
Gregor Moe



[National](#)

City Station

Online Structures
Third Place 2009
John Carty



Gray's

Corner Tavern



Model



Offline Structures
First Place 2009
Greg Gray



Fred's

Phillips 66 Gas Station Model



Offline Structures
Second Place 2009
John Carty



The Lilac



Cafe

Offline Structures
Third Place 2009
Gregor Moe



West Side

of Acme Avenue

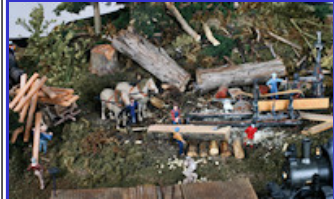


Diorama
First Place 2009
John Carty



Period

Logging Scene



Diorama
Second Place 2009
Tom Trotter



Cressmont

WV with Barn & Dairy



Best in Show
Phil Bonzon



Gold Prince

Mixed Train



Whole Train
First Place 2009
Dave Roeder



Climax with

Logging Train

Whole Train
Second Place 2009
Phil Bonzon

	
 <p>B&O #2404 with Freight Train</p>	<p>Whole Train Third Place 2009 Jack Stroker</p>
 <p>Durango #4 and Goose #5</p>	<p>Prototype Photograph First Place 2009 Ron Schlueter</p>
 <p>Night at the Durango Ash Pit</p>	<p>Prototype Photograph Second Place 2009 Ron Schlueter</p>
 <p>Double- Heading on the Wabash, Frisco & Pacific</p>	<p>Prototype Photograph Third Place 2009 Richard Schumacher</p>
 <p>Warehouse with B&O Boxcar</p>	<p>Model Photograph First Place 2009 Phil Bonzon</p>
	<p>Model Photograph Second Place 2009 Phil Bonzon</p>



[Swandale, WV in Summer](#)



[Ice](#)

[Ready for](#)

Model Photograph
Third Place 2009
John Carty

Model photos by Richard Schumacher

Send email to webmaster@gatewaynmra.org with questions or comments about this web site
Copyright © 2012 Gateway Division NMRA, [Privacy Policy](#), [Legal Notice](#), [Search](#), [Visitors](#)
This page last updated January 03, 2011

[Back](#) [Home](#) [Topic Menu](#) [Next](#)