

RPO

Volume 14, Number 4
Winter 2007

www.gatewaymra.org



RPO

Winter 2007: Volume 14, Number 4

The RPO is the official publication
of the Gateway Division
of the National Model Railroad Association

Editor:

Michael Thomas

Cover Photograph:

Ron Reagan

This Issue's Contributors:

Bill Levin

Dave Roeder, MMR

Curt Regensberger

Venita Lake

Articles, photos and any other materials for publication are to be sent to the Editor. No payment can be made for publication of any materials. Regular issues are published quarterly: Spring, Summer, Fall, and Winter. Subscriptions to the RPO are available to members of the NMRA as a service provided by members of the Gateway Division. Send subscription applications and renewals to the Division Treasurer.

Any item may be reproduced by other NMRA publications, unless specifically restricted, as long as author and source credit is included. Advertising of interest to our membership is accepted for publication in the RPO. Contact the Editor or Treasurer for current rates and artwork size information. Please send submissions, suggestions, letters, and address corrections to:

Editor, The RPO
Gateway Division NMRA
PO Box 510305
St. Louis MO 63151-0305

Articles may be submitted as handwritten, typed, plain unformatted text on disk, or plain text via email to rpo@gatewaynmra.org; photo submissions may be made as hi-res digital files, 35mm slides or negatives or as prints.

All content is Copyright © 2007 Gateway Division NMRA unless otherwise noted.

Visit our website at www.gatewaynmra.org

In This Issue

| | |
|---------------------------------|----|
| Superintendent's Desk | 2 |
| Access Gate | 3 |
| Steel Industry Operations | 7 |
| Library Program | 10 |
| Division Minutes | 10 |
| Coming Events | 15 |

On the Cover

Ron Reagan took this shot of Mikado #473 at Durango last fall.

Superintendent's Desk

by Bill Levin

2007 is a fantastic Model Railroading year and I invite all to participate in the Gateway Division's activities. By now the Holiday and New Year celebrations are again memories, as we plan our New Years Resolutions for 2007. The Division officers decided to focus on two major areas for the year.

First, we want to continuously improve our programming for YOU, our members. By having great programming, we hope you want to come to our events and further your enjoyment of the hobby. The mainstay of our programming is sharing Model Railroading information at our monthly meeting clinics and in this publication. Our monthly meeting topics are based on the survey that we took at the beginning of last year. So if you have a neat idea or other information that others may find useful, I encourage you to take the time to develop a clinic or write an article and share. The second major programming event is our Fall Meet. In 2006 we had a very successful Fall Meet, and we hope to have even more layouts in 2007. A third and new programming event in 2007 are Layout Weekends. We will have layout tours (similar to the Fall Meet, but without

clinics) so you can see how other members have modeled and operate their layouts.

A second focus area is promoting Model Railroading to recruit new members and retain and encourage participation by you, our current members. Our main membership focus will be to attract "baby boomers", the generation where many had electric trains in their youth, in hopes of rekindling their interest. Resurrecting the Traveling Model Layout will be the cornerstone of this effort. The Traveling Model Layout has always been a great magnet for prospective members and youth where ever it is taken. Bob Boedges has agreed to lead the building and volunteers are welcome. To keep layout costs low, we are seeking donations from vendors and from you, our members. And because there are fewer Train Shows scheduled in 2007, we are going to try an additional venue and set up in shopping malls on several weekends. Our purpose is to attract new members and sell raffle tickets for fundraising. For this to be successful we need volunteers to help transport the layout (vehicle available, we need driver) and staff the layout/membership booth on weekend of train shows or that we are at a mall.

SO MAKE A NEW YEARS RESOLUTION TO HELP IN SOME WAY.

I appeal to each of you, whether you have participated or not in the past, we need your help to accomplish the above. We are all busy, but if each member could participate a bit, we can spread the effort so that it is not burdensome for anyone. Consider if you are able to help in the following areas:

- Be a clinician**
- Write an article**
- Open your layout for viewing on a weekend**
- Help with the Fall Meet**

Donate locomotives, rolling stock and/or structures for the Traveling Model Layout

Staff the Traveling Model Layout at Train Shows and Shopping Malls

Transporting the Traveling Model Layout (be a driver)

We all can share and enjoy Model Railroading even more. Please call or email me if you are willing to help in any of the above ways.

Bill Levin

314-878-2119

wmbill@hotmail.com

Access Gate

by Dave Roeder MMR

Like many model railroaders, I have been around long enough to see quite a few layouts. There are also many different bench work designs and track arrangements. The current trend seems to be the walk-in around the walls design. This is best from the access standpoint since it allows unlimited entrance/exit. But there are also those who for various reasons do not want to loose the space required to turn trains around at each end of the entrance to a walk-in design. Most walk-in layouts have a return loop at each side of the entrance. The use of a duck-under is not a good solution. They limit access and are a hazard to tall folks.

A properly designed gate allows easy access without any drawbacks. The key to building a successful gate is in the design and construction. A good design takes into account not only access, but expansion/contraction, safety, and ease of maintenance. The gate on my HO scale Webster Groves and Fenton Railroad has all of these features. The design takes into account change due to temperature and humidity.

The features are as follows:

- A.** Hinges are standard interior 4 inch length with 4 wood screws in each plate.
- B.** Door latch is a standard interior model with European style handicapped handles.
- C.** Spring tension device is a bolt or roller type as used to remove play from screen doors or as used on sliding doors. This device pushes the door latch mechanism back against the flat side of the latch striker plate. These can be found at most hardware stores in the door hardware parts aisle.
- D.** Adjustable tee-girder roadbed made from 3/4" plywood. For HO scale, the track roadbed is a piece cut to 3 3/4" X 28" which is strengthened by a piece of 3/4"

- X 7/8" X 27" long piece of white pine set on edge.
- This section is supported on four pieces of 1/4-20 UNC threaded rod. These are set into the top rail of the gate using 1/4-20 nut inserts of the type used for leveling legs on furniture. Flat washers and hex nuts are used to attach the roadbed section to the top rail. These four assemblies provide vertical adjustment for the tee section of roadbed. See Fig. 1
- E.** The adjustable track section provides adjustment of the gap between the latch end of the gate and the fixed track on the layout. This track section is made from an Atlas re-railer / grade crossing which has been modified to allow 1/4" lateral

wood screws. The section of the re-railer attached to the gate is also attached with four wood screws, but the holes in the re-railer for these four screws are slotted to allow plus or minus 1/8" lateral adjustment.

On the gate end of the re-railer a 6" section of Atlas code 100 or code 83 flextrack is added. The ends of the rails are notched vertically 1/2" using a flat file. There must be one left hand and one right hand slip rail end on each rail to form the expansion joint. One end of the track has slip rail joints on the re-railer section. These mate with corresponding slip rail joints on the fixed track attached to the gate roadbed. See figure 2.

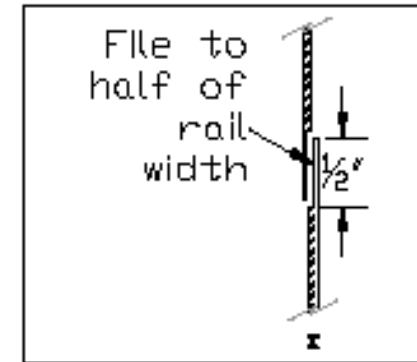


Figure 2

F. The track on the gate must be wired as a separate block. Wires dropped down from the fixed and the adjustable track sections will insure good performance and reliability. These wires must be routed through the hinge post

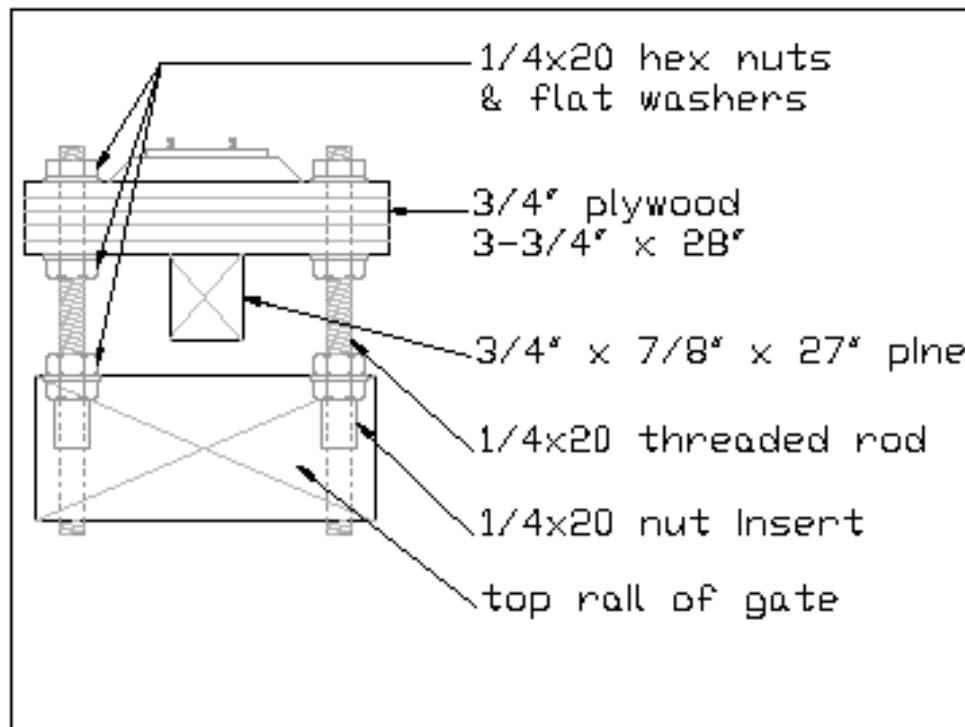


Figure 1

adjustment of the gap at the latch end of the gate. The Atlas re-railer is

permanently attached to the layout on the fixed section of the layout using small

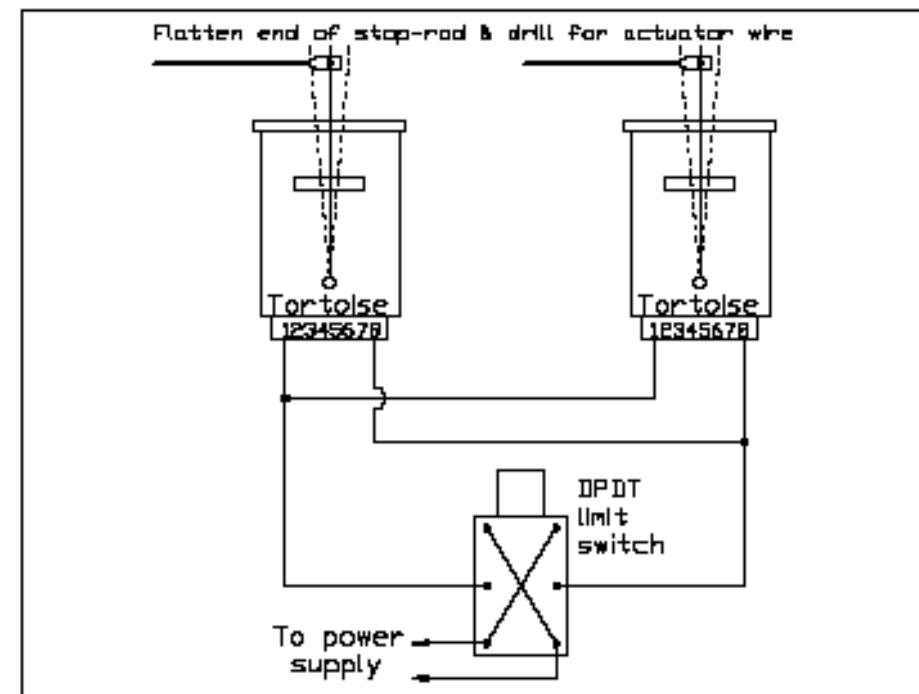


Fig. 3

with enough slack to permit the gate to be fully opened. Make sure the holes through the roadbed for the adjustable track section are elongated 1/2" to allow adjustment.

G. Mechanical interlocks at each end of the fixed track work on the layout prevent accidental crashes off the end of the gate opening. These are made from Tortoise switch machines mounted horizontally.

Power to operate these is provided through a DPDT limit switch mounted so as to be triggered by the closing or opening of the gate. The stop rods are made from coat hanger wire .062" diameter. One end is hammered flat for a distance of 1/4", then a .031" dia. hole is drilled in the flat to clear the tortoise activating wire. I use .020" diameter music wire in the tortoise switch

machines. A hole is also drilled through the roadbed in the center of two ties to clear the rod. Wire the switch machines to raise the rods when gate is open. See figure 3.

H. General construction: The gate is made from 2 x 4 lumber for the frame. The hinge post and latch post are 4 x 4 lumber. It is important to securely attach both posts to the floor. Concrete anchors or equivalent are required. Another solution is to place a 2 x 6 flat on the floor and attach it with liquid nails. The gate does not need to go all the way down to the floor. The bottom sill plate on the gate can be centered between the two

hinges. This gives plenty of strength and still allows you to crawl under in the event that you need to get out with the gate closed. See figure 4 for general location of components keyed to these instructions.

One final note: This gate has been in use since 1995. I have adjusted the gap at the latch end about once a year. The leveling studs need attention about once a year as well. I added a de-humidifier to my basement after talking to a friend of mine and found it to be a good investment. The drier air eliminates seasonal humidity changes on the layout.

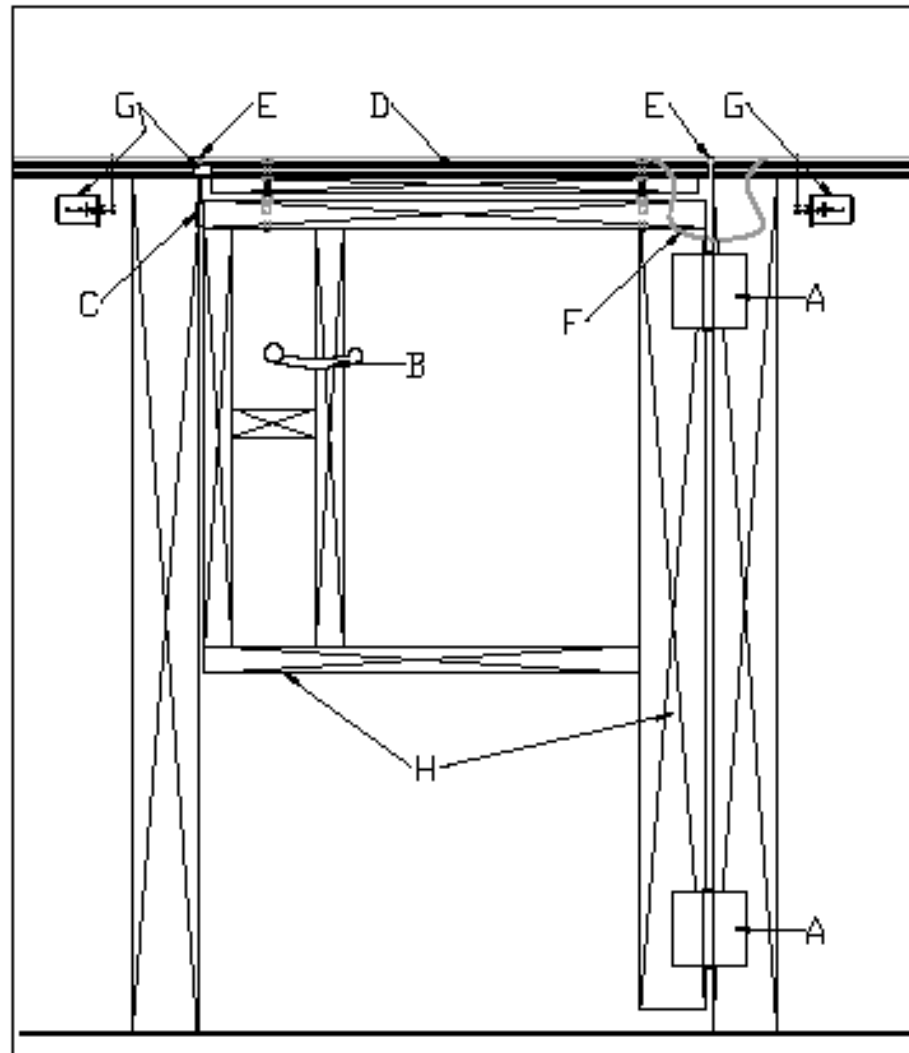


Fig. 4

Operations and the Steel Industry

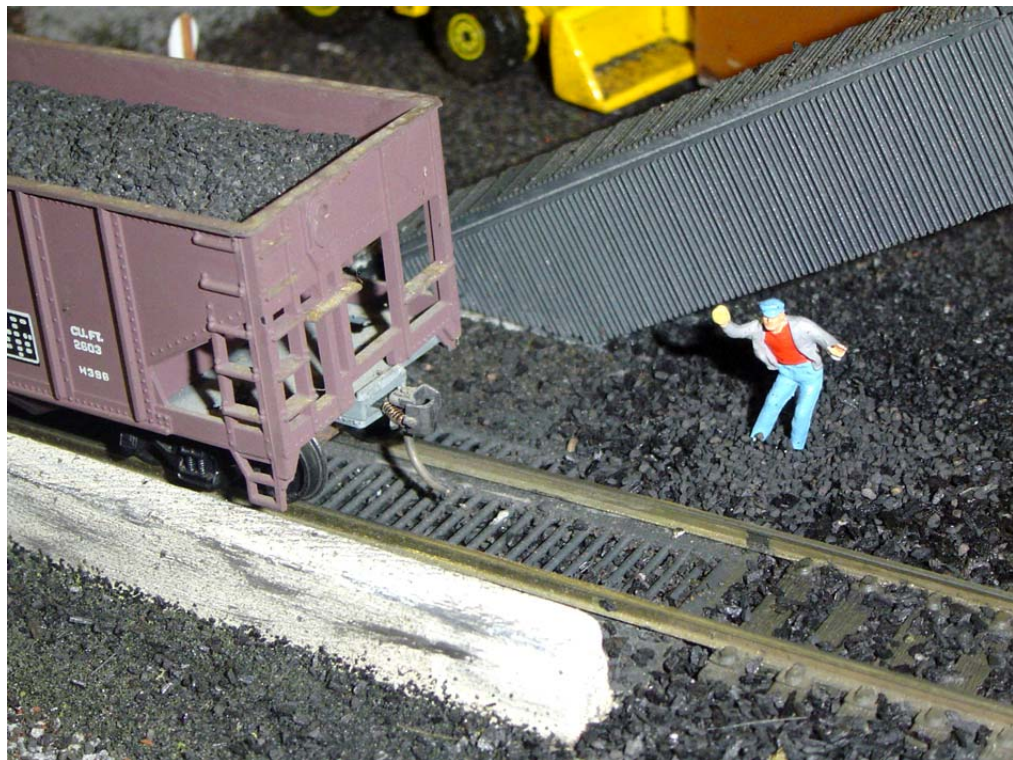
by Curt Regensberger

Just when it looked like the steel industry in the United States was history the steel mills that survived are doing better than ever, thanks to the high worldwide price

of steel. The railroads being the main means of transportation for the steel industry are welcoming the success of the American steel industry.



I would like to share with you my switching operations on my railroad The Streator Connection. The switching operations center on the Steel mill which is mostly made up of the Walthers kit, I have scratch built a few structures within the mill. A steel mill receives raw materials in various cars and ships finished goods in a variety of cars.



The coal dump and conveyor

furnace is within the same complex as the blast furnace; however some steel mills have these facilities miles apart which require the bottle cars to travel the railroad mainline. At the Electric furnace scrap is melted and mixed with the molten metal to form steel.

The finished product at the steel mill is naturally steel, the steel can be in the form of beams, pipe or coils. My particular mill produces steel coils; these steel coils leave the mill in gondolas or

A steel mill has an enormous appetite for coal, scrap and iron ore. Coal is brought in and converted to coke at the coke oven, the coke is then mixed with iron ore along with limestone at the blast furnace to make molten steel. The molten steel is transported to the electric furnace via bottle cars. On my layout the electric

coil cars. A by-product of the coke making process is tar, so my steel mill has a tar loading facility which loads tank cars. Another by-product of the steel making process is slag, slag is used a cheap fill for building projects, slag is shipped from the mill in hopper cars.

I have various industries that receive coil steel, I have a pipe plant that receives coil steel cars and ships pipe out in gondolas. I have an auto parts plant that receives coil cars and ships out auto



Filling bottle cars



Tank cars loading at tar storage tanks

parts in 86 ft box cars. I have a steel beam plant those coverts coils of steel into steel beams and ships these beams out in gondolas and flat cars. I also have a large trans-loading facility for unloading coils as well as pipe and beams from rail cars to trucks.

When I operate I send out unit coal and ore trains from staging to the steel mill. A dedicated local is built in the main classification yard and takes loaded gondolas of scrap, loaded hoppers of limestone along with empty coil cars to the steel mill. The local then returns with loaded coil cars, tank cars of tar and hoppers full of slag. The cars are classified in the yard and then sent to the various industries mentioned earlier around the layout that use steel. I also have a large scrap yard that ships gondolas of scrap for use in the steel mill which the mainline locals bring into the classification yard. The steel mill has its own yard which the local drops off and picks cars up. The mill has its own switch engine that moves cars around the steel mill. My locals are made up of one engine, usually a GP-38 or GP-40, my only piece of brass, a Conrail transfer caboose brings up the rear of the steel mill local.

To try to add realism I tried to separate the industries that use or supply products of the mill by placing these industries where a scenic divider separates them from the view of the steel mill. To generate scrap for the scrap yard, I use Walthers industrial dumpsters 933-3516 at my industries to collect scrap metal.

Article Title

by somebody

We are always in need of articles – both long and short – and photographs for the RPO. Deadline for the Spring 2007 issue is April 1. Email the editor at:

mathomas@speakeasy.net

Adding Scenery – Where do You Start?

by Venita Lake

On Wednesday, January 17, 2007, Rich and Venita Lake will discuss how to start adding scenery to your model railroad. Their presentation at the Daniel Boone Branch of the St. Louis County Library at 300 Clarkson Road at 7:00 p.m. is part of a series of model railroad-related discussions being planned at the library throughout the coming year. The Lakes hope to cover a range of ideas on scenery such as pinning down regions to be modeled and selecting structures and materials that bring the scene to life.

Division Minutes

Recorded by Ron Gawedzinski, Clerk

Gateway Division Meeting Minutes for September 18, 2006

Clinic: Superintendent Bob Boedges called the meeting to order at 7:02 pm. Bob introduced Tim Hessel, who gave a clinic on animation projects using electronics. Tim showed how to construct a flasher circuit for the LED's of a crossing signal. The membership thanked Tim for his very informative clinic.

BUSINESS MEETING

Superintendent Bob Boedges called the business meeting to order at 8:02 pm. There were 28 members and no guests present.

Visitors: None.

Minutes of the August 2006 Meeting:

The minutes of the August 2006 Meeting were distributed. The minutes were accepted as presented.

Treasurer's Report: David Lyon, Treasurer, distributed printed copies of the one-month Treasurer's Report (August 21 through September 17, 2006). The Treasurer's Report indicated a balance in all funds of \$26,660.49. The report was accepted as presented.

Director's Report: Jim Anderson reported the Trinity Lutheran Church has asked our Division to present a "How To Do Model Railroading" Clinic, like we did last year. Jim said we would do it on Saturday, October 28, 2006, at the Church, a week before our Fall Meet. We will also bring our Project Layout to the Clinic. If any member wishes to participate and demonstrate the fundamentals of model railroading please contact Jim.

Old Business:

Status Of The RPO: Mike Thomas stated the deadline for submitting articles for the next RPO would be the end of September. Announcements for the upcoming Fall Meet and the 2007 Election of Officers Ballot should be in this issue.

Project Layout XIII (13): Bob Boedges said we had only \$22 in ticket sales at the Boeing Model RR Show on September 9. The reason for this low amount was a very poor location of our table. We have only one more show, our own Fall Meet, to try to earn more income. The Mississippi Valley Model Railroader N Scalpers informed us that they do not want our layout at their meet on October 14 – 15, as they will be selling tickets on their own layout. The meet will be at the Kirkwood Community Center. (Late Update: Project Layout will be shown at Kirkwood Community Center.) Bob mentioned we need a Chairman for our new Project Layout XIV (14). Anyone interested should see Bob.

Achievement Program: Don Taschner had no report.

Fall 2006 Meet: Hank Kraichely reported we are sold out on the 42 tables available for the meet. Bob Boedges said we will do a Model Contest. Bob said he and Dale Bitsch are working on the Boy Scout Merit Badge Project. However, a conflict on dates has arisen as the Scouts were also scheduled to be at the Museum Of Transportation on the same day. The Boy Scout Council will decide if they want two projects on the same day. A comment was made we need more volunteers to help out with the Model Contest. Time is just too short to get everything ready to hand out the awards on time. Discussion followed. Several recommendations were made and will be implemented at the Meet. Hank reported the Home Layout Tours would be primarily in West County, along with near North and South County.

Don Taschner reported this would be the last year for the annual "Model Railroad Traveling Plaques". Reason being there's room for only one more name on the plaques. The question to be resolved is what should be done with the

plaques? Who should get them? Bob recommended we talk about this later on.

Hank commented about a special home layout tour program run in the fall of the year by the San Jacinto Model RR Club, Houston, Texas. He discussed the details of their program as referenced on the Website. Hank said he brought up this program to see if our Division members might implement some parts of it some time during this winter. Discussion followed. Bob Boedges recommended to Hank that his idea be put forth in a proposal and brought up at the October meeting. Hank agreed to do so. If any members have thoughts about this see Hank or Bob at the end of the meeting.

Bob commented about Clinics scheduled for the Meet so far. Dave Roeder on "Using Photographs To Build (the Outer Skin of) Structures". Bob on "Operations Options". Someone on "Prototype Operations". Ronald Reagan on "Computer-Aided Design Of Track Work Constructs". If any member would like to present a clinic see Bob.

Meeting Display Project: Bill Levin had no report.

Advertising on the Website: Hank Kraichely reported on the New Business issue from last month of having a firm advertise on our Website and pay our cost to run the Website. Bowser Mfg. Co. is interested in doing this. Bowser suggested it might be worthwhile to have another one or two firms advertise also. This way, it wouldn't look like Bowser was sponsoring the Website itself. Hank stated everything is still in the talking stages. More information should be available at next month's meeting.

Membership: Hank Kraichely reported he will mail a letter shortly to every NMRA member living within the boundaries of the Gateway Division and asking them to update their mailing address, telephone number and E-Mail address. Also, he will ask if they are interested in receiving the monthly meeting reminders by E-Mail. Information for the updated Membership Directory should be ready for printing by the end of the first week in October.

Merchandise: Hank Kraichely stated if anyone is still interested in HO wheel sets to let him know so he can add their names and quantities to the list. Hank asked if anyone was interested in buying the Micro Trains compatible N scale wheel sets.

Nominations Committee: Bob Boedges reported the following Officers will stay and run in their positions: Jim Anderson, Director, Ron Gawedzinski, Secretary, and Dave Lyon, Treasurer. The two positions left unfilled are the

Superintendent and Assistant Superintendent. If any member is interested in running for these positions see Bob, Dick Levin or Dick Wegner.

Other Old Business: None.

New Business:

National Convention Registration: Venita Lake asked members to try a "test" Website for online registration for the 2007 National Convention. The address is <http://www.regonline.com/nmraindetroit2007>. Members should provide feedback to Venita by phone or Email at vlake@mindspring.com.

Announcements: None.

50/50: Irv Kuehling won \$20 in the drawing.

Adjournment: A motion to adjourn was made by a member, seconded by another member and approved by a voice vote of the membership at 9:01 pm.

Respectfully Submitted,
Tom Bousman, Acting Clerk

Gateway Division Meeting Minutes for October 16, 2006

Clinic: Superintendent Bob Boedges called the meeting to order at 7:12 pm. Bill Levin introduced Gary Hoover, who gave a clinic on "Prototyping San Bernardino." Gary showed how he modeled onto his layout the impressive San Bernardino, California, prototype railroad structural setting of passenger station, roundhouse and other buildings. The membership thanked Gary for his very informative clinic.

BUSINESS MEETING

Superintendent Bob Boedges called the business meeting to order at 8:10 pm. There were 16 members and one guest present.

Visitors: The Division welcomes guest Patty Bousman.

Minutes of the September 2006 Meeting: The minutes of the September 2006 Meeting were distributed. The minutes were accepted as presented.

Treasurer's Report: David Lyon, Treasurer, distributed printed copies of the one-month Treasurer's Report (September 18 through October 15, 2006). The Treasurer's Report

indicated a balance in all funds of \$26,129.52. The report was accepted as presented.

Director's Report: Jim Anderson gave no report.

Old Business:

Status Of The RPO: Mike Thomas stated the RPO is in progress and should be mailed out two weeks before the Fall Meet. Included with the mailing of the next RPO will be the 2007 Election of Officers Ballot and the new Membership List, if Mike receives it on time to print.

Project Layout XIII (13): Bob Boedges said we were informed at the last minute that we could bring our layout to the Mississippi Valley Model Railroader N Scalpers show on October 14 – 15, at the Kirkwood Community Center. We had very strong sales at the show. Special thanks goes to Mike Satke, who spent both days manning the layout. Additional special thanks goes to Tom and Patty Bousman, Brian Post, Dick Wegner, Dale Dewitt and Mike Thomas for their help at the show. The next showing of the layout will be at Trinity Lutheran Church on Saturday, October 28, as the display for a clinic presentation, "How To Do Model Railroading." After that, the layout would be at our Fall Meet where it will be raffled off.

Bob stated it would be time for our new Project Layout XIV (14) after the Fall Meet. Last month Bob asked for a volunteer to be Chairman for the new layout but no one has stepped forward. Richard Schumacher has volunteered to plan and design the new layout for us as well as contribute buildings, structures and rolling stock. Bob then described the duties involved with the new layout, basically, build it, move it, schedule it and sell it. He opened the subject to discussion. After discussion, Tom Bousman made a motion, "I move that we suspend the building of the project layout for at least one year." Seconded by Ron Kraus. There was no discussion. A vote was taken and the motion passed.

Achievement Program (AP): Don Taschner was not present. No report.

Fall 2006 Meet: Bob Boedges reported we are sold out on all available tables for the meet. We have two display layouts this year, the Quincy Society of Model Engineers will bring their modular layout, and the Gateway Lego Users Group will bring their distinctive Lego layout.

Bob mentioned clinics scheduled for the meet are: Bob Boedges on "Operational Options", Ronald Reagan on "Computer Aided Design Of Trackwork Constructs", Pete Smith on "Scratchbuilding Buildings Using Styrene", Dave Roeder on "Scratchbuilding The Kirkwood

Depot", maybe Ed Hawkins on "Prototype F-7 Locomotive's" and Gary Hoover on "Prototyping San Bernardino." He said vendors have been generous in providing a nice selection of door prizes.

Bob said another project for consideration at the meet would be a Children's Activity Room. However, it would have to be staffed. Discussion followed. It was decided not to do the Children's Activity Room. Bob said the Boy Scout Merit Badge Project would not be implemented at the meet because of a schedule conflict on the same day with another project sponsored by the Boy Scout Council at the Museum Of Transportation. Bob encouraged members to take some of the flyers advertising our Fall Meet and distribute them to local hobby shops and bulletin boards of grocery stores and churches. He mentioned we would need help on Friday afternoon, November 3, in setting up the tables and chairs for the meet, as well as after the meet on Saturday afternoon to put things back and clean up the area. Please contact Bob or Jim Anderson or Dick Wegner.

Bob also said we need some volunteers to help sell chances on the Project Layout. Don Taschner would need help in the Model Contest Room, so please volunteer.

Finally, Bob reported home layout tours would be at Bob Boedges', Dave Roeder's and Randy Meyer's. (Late Update: also, Mary Beth Powell's and Len Applebaum's.)

Meeting Display Project: Bill Levin proposed not doing the project since we are not doing the new Project Layout in 2007. Bob Boedges stated we would table the project until something changes in the future (that is, we get volunteers for projects.)

Advertising on the Website: Hank Kraichely was not present. No report.

Membership: Hank Kraichely was not present. Bob Boedges reported Hank did a mailing to everyone in the Division, which is over 300 people. He received 74 responses. 48 members said they would take their RPO and their monthly meeting notice by E-Mail. Three members said they would take their RPO by hard copy and their monthly meeting notices by E-Mail.

Merchandise: Hank Kraichely was not present. Dave Lyon brought the HO 33 inch wheel sets for sale.

Nominations Committee: Bob Boedges reported we now have a full slate of officers to run for the 2007 Election. The ballot will be with the next RPO.

For Superintendent, Bill Levin
For Assistant Superintendent, Hank Kraichely

For Paymaster, Dave Lyon
For Clerk, Ron Gawedzinski
For Director, Jim Anderson

There would be space on the ballot for write-in candidates for interested members.

The 2007 Election Committee will be Bob Boedges, Mike Thomas and Bob Amsler. The ballots would be returned to Bob Boedges.

Members' Weekend Home Layout Tours: Bob Boedges reported that last month Hank Kraichely brought up the idea of having weekend home layout tours sponsored by Division members during this winter. Bob said Hank has now changed the time to the spring of 2007. Bob polled the members (for Hank) to see: 1) Is it a good idea to do it at all? And 2) Who would be interested in having their home layout open (for the general public as well as members) for tours over a weekend? Dave Lyon reported further on the details of the program as proposed by Hank. Discussion followed. Members agreed it was a good idea and that we could come up with some members' home layouts for the tour, pending some rules established on home security.

New Business:

Screen Needed for Video Presentations: Bob Boedges stated the Division needed to obtain a screen of its own for slide/video/movie presentations as the one we use belongs to Mike Thomas. Tom Bousman made a motion, "Bob Boedges be authorized to buy a screen for the cost of up to \$200." Seconded by Ron Kraus. Discussion followed. A vote was taken and the motion passed.

Announcements: Bob Boedges has a brochure from Southwind Region, Louisville, Kentucky, announcing a Regional meet April 12 – 15, 2007.

Bob also said Brian Post left brochures from the Halifax & South-Western Railway Museum, Lunenburg, Nova Scotia, Canada, that he and Ron Gawedzinski recently visited on their Canadian Maritimes Railway Excursion.

New NMRA Membership Contest – Bob Boedges reported he received an E-Mail from NMRA Headquarters about a new membership contest. It will be for three months. The notice read as follows, "Every month from November 2006 thru January 2007 the NMRA will be randomly drawing the names of three new members who will each win a brand new locomotive. In addition, if that new member has included the name of an existing NMRA member on his/her membership application, the NMRA member also wins a brand new locomotive. Look for our ads in

the November, December and January issues of Scale Rails, and remember the contest is limited to U.S. residents only and doesn't include Railpass memberships." Here's a good incentive for existing members to sign up new members. Flyers for this new membership contest will be at the Fall Meet.

November Meeting – Bob Boedges said next month's meeting will be the annual Christmas Party on November 13 at Trinity Lutheran Church at 7:00 PM. (There will be no business meeting.) Bill Levin will provide the entertainment. He will present a pictorial review of his recent rail trip in Peru, South America. Family members are welcome. All members attending are asked to provide an appetizer or dessert dish sufficient for 8 to 10 people. The Division will provide soft drinks, tea and coffee. There will be door prizes and something for all the ladies to take home. All members are urged to attend for the fun and fellowship.

50/50: Tom Kues won \$10 in the drawing.
Adjournment: A motion to adjourn was made by a member, seconded by another member and approved by a voice vote of the membership at 9:04 pm.

Respectfully Submitted,
Ron W. Gawedzinski, Clerk

Gateway Division Meeting Minutes for October 16, 2006

Clinic: Superintendent Bob Boedges called the meeting to order at 7:00 pm and introduced himself as the clinician for the evening. The clinic subject was "Operational Options on the Phussin and Fummin." Bob spoke eloquently on the trial and error process that he followed in constructing the Phussin and Fummin Railroad. He then described the procedure that he followed in developing three operations techniques that he uses in operating the layout pointing out advantages and disadvantages of each. Bob spent nearly a whole hour with his presentation and then quit. It was a very informative and entertaining evening. Bravo, Bob.

BUSINESS MEETING
Superintendent Bob Boedges called the business meeting to order shortly before 8:00 pm. There were 13 members and no guests present.

Visitors: None.

Minutes of the October 16, 2006 Meeting:
Bob Boedges reported that Ron Gawedzinski was stranded in the Kansas City area and could not make the meeting. Consequently, the minutes for the October 16, 2006 meeting were not available for distribution. The minutes, however, are included in the last RPO and will also be available at the next meeting.
Treasurer's Report: David Lyon, Treasurer, distributed printed copies of the Treasurer's Reports for the periods October 16 through November 15, 2006 and November 16 through December 18, 2006. The balance in all funds as of December 17, 2006 was \$26,771.24. There were no questions and the reports were accepted as presented.
Director's Report: Jim Anderson was not present and there was no report.

Old Business:
Status Of The RPO: Mike Thomas said that the deadline for submitting articles for the next RPO was January 1, 2007. Or shortly thereafter.
Achievement Program (AP): In Don Taschner's absence Bob Boedges read the names of those who had received Achievement Awards since the last reporting.

Fall 2006 Meet: Bob Boedges reported that the Fall Meet netted over \$1,200 for the Division. He proclaimed the Meet a success. It was observed that the size of the facility might be a limiting factor for future Meets.

Advertising on the Website: No report.
Membership: Hank Kraichely noted that he was still receiving updates to the information in the membership directory. He also noted that several members had expressed agreement to receiving the directory by e-mail. Hank is considering the possibility of issuing updates via e-mail.

Merchandise: Hank Kraichely reported that there are still some HO wheel sets available. He also noted that he is looking into obtaining some scale wheel sets at a reduced price.

2007 Election of Officers: Bob Boedges reported on the outcome of the recent officers elections. The results are (to the surprise of no-one):
Superintendent: Bill Levin
Assistant Superintendent: Hank Kraichely;
Clerk: Ron Gawedzinski
Pay Master: Dave Lyon
Division Director: Jim Anderson

A motion to destroy the ballots was made by Richard Lake and seconded by Dick Wegner. A lively discussion ensued as to the appropriate method to follow to destroy the ballots. It was finally decided to throw them in the trash.

November Holiday Party: Bob Boedges reported on the Holiday Party. The party was a fun evening for those who were in attendance. The food was outstanding as was the entertainment supplied by Bill Levin. Bob reported that a number of people who would have attended came a week later on the regular meeting night and, unfortunately, missed the party. The party date will need to be looked at carefully next year.

Screen Purchase: Bob Boedges reported that he had purchased a screen as directed by the membership vote at an earlier meeting. The purchase price was less than the \$200 authorized by the vote.

New Business:
County Library Presentation: Venita Lake reported that she had agreed with the County Library to make a presentation at one of their programs on the subject of model railroading. She and Richard will be making the presentation at the Daniel Boone Branch at 7:00 pm on January 17, 2007.

50/50: The 50/50 drawing was won by Tim Stout. Due to the rather small turnout he received \$11.50.

Adjournment: It was moved and seconded to adjourn. There being no opposing votes, the meeting was adjourned at 8:08 pm, a modern record for early adjournment.

The next meeting is January 15, 2007, at Trinity Lutheran Church.

Respectfully Submitted,
Dave Lyon, Acting Clerk

Coming Events

Do you know of an event of interest to other Gateway Division members? Send the info to the editor so it can be listed in future RPOs and on the www.gatewaynmra.org website.

NMRA Divisions or St. Louis area clubs may have their event listed here by sending a description of the event, in the format shown here, to the Editor (rpo@gatewaynmra.org).

FEB 10, 2007: THE DUPO SHOW YEAR 2007, Dupo High School Gymnasium, Dupo, Illinois 10 am to 3 pm. Sponsored by DCHS and Reynolds Railways 17th year! .

MAR 17, 2007: BOEING EMPLOYEES' RAILROAD CLUB-ST. LOUIS RAILROAD SWAP MEET, Greensfelder Recreation Complex at Queeny Park, 550 Wiedman Rd., St. Louis, MO, 10 am to 3 pm, Adm: \$3, Under 12 free w/pd adult, Tables \$15, Seller setup 8 am – 10 am, Info: Wayne Schimmel, 733 Hwy Y, Winfield, MO 63389-2206 wwhteirse@aol.com or 636-668-6313 after 6 pm.

MAR 24 - 25, 2007: GREAT TRAIN EXPO, Gateway Center, Collinsville, IL, 10:00 am – 4:00 pm each day, Adm: \$7.00, 12 & under free w/pd adult, Info: PO Box #34, Elmhurst, IL 60126, Phone: 630-279-4048 OR 630-279-4087 Fax: 630-214-4113, staff@greattrainexpo.com

AUG 4, 2007: MID-CONTINENT REGION ANNUAL CONVENTION, Lenexa Community Center, Lenexa, KS; hosted by the Turkey Creek Division, Co-Chairs: Brad Morneau (913) 897-0669, bmorneau@kc.rr.com, and Louis Seibel, L-seibel@comcast.net, (913) 393-3495; Committee Chairs: Paul Richardson, MMR, Model & Photo Contests; Bob Jefferis, Swap Tables & Railroad Groups.

Division Officers

Superintendent

Bill Levin

Assistant Superintendent

Hank Kraichely

Clerk (Secretary)

Ron Gawedzinski

Paymaster (Treasurer)

Dave Lyon

Division Director

Jim Anderson

MEETINGS:

The Gateway Division meets on the 3rd Monday each month, at 7:00 P.M.

Odd numbered months: Trinity Lutheran Church, 14088 Clayton Road at Hwy 141 (Woods Mill), Ballwin, MO

Even numbered months: VFW Hall, 221 West 1st St., O'Fallon, IL

NMRA MCoR Region & Gateway Division

The National Model Railroad Association (NMRA) is a world-wide organization dedicated to all aspects of model railroading. In order to bring the most benefit to its members, the association is subdivided into Regions, and each Region has a number of local Divisions. The Gateway Division is part of the Mid-Continent Region, which represents Missouri, Kansas, Arkansas, Oklahoma, Nebraska, and parts of Iowa and Illinois.

The Mid-Continent Region is represented on the NMRA's Board of Trustees. It publishes a quarterly bulletin, *The Caboose Kibitzer*, and holds an annual convention meeting that usually includes modeling clinics, local tours of layouts or prototype facilities, and model contests.

The Gateway Division is well represented on the regional and national levels of the NMRA. Its members actively promote the modeling hobby through local monthly meetings, this quarterly newsletter, an annual train meet in the fall, participation in area train shows and other events, and a comprehensive website. Annual subscriptions to the Gateway Division publications are \$3, with all subscriptions running from July 1 through June 30. In addition to the quarterly newsletter, a member directory is published listing names, addresses, and information about individual modeling interests. New members also receive a Division membership pin.

Membership is open to anyone from the beginner to the most advanced modeler, of all ages, so that everyone can share questions and knowledge of the hobby. Visitors are welcome at the monthly Division meetings listed on our website, www.gatewaynmra.org

How to Join

Visit our website, complete the form at <http://gatewaynmra.org/membership.htm>